



# MILLMERRAN SHOW SOCIETY INC.

87th SHOW

2-3 MARCH 2024

## PAVILION SCHEDULE

JUDGING FRIDAY 1 MARCH 2024

\*\*\*\*\* Trophy donated by *Chris & Annie Muir* \*\*\*\*\*

*Awarded to Adult Exhibitor gaining highest points in Pavilion Sections  
(Excluding Produce Pavilion)*

\*\*\*\*\* Trophy donated by *TrisheeVee's Hair Boutique* \*\*\*\*\*

*Awarded to Junior Exhibitor gaining highest points in Pavilion Sections*

\*\*\*\*\* Trophy donated by *Jim & Amelia Stower* \*\*\*\*\*

*Awarded to Adult Exhibitor gaining highest points in Produce Pavilion*

## OPENING HOURS OF PAVILIONS

**Saturday 2 March**

**9:00 am - 6.00 pm**

**Sunday 3 March**

**9:00 am - 3.00 pm**

## PLEASE READ THE SCHEDULE BEFORE ENTERING

- ALL ENTRIES TO BE TAKEN IN PAVILION AS PER SECTION

- PAVILION OPEN WEEK PRIOR TO SHOW:

**TUESDAY 12.30PM - 4.30PM**

**WEDNESDAY & THURSDAY 9.30AM - 4.30PM**

OFFICE OPEN ONE WEEK PRIOR TO SHOW - 46951419

MONDAY - THURSDAY 9.30AM - 4.30PM

FRIDAY FROM 7.00AM

PRESIDENT: *Patrick Lunney* 0428052254

SHOW SECRETARY: *Lyn Kirby* 0429954151

COMMITTEE SECRETARY: *Karen Dieckmann* 0447543149

PAVILION STEWARD: *Kassie Clark* 0423512355

WE LOOK FORWARD TO RECEIVING YOUR ENTRIES FOR THE 2024 SHOW  
AND REMEMBER: **'YOU HAVE TO BE IN IT TO WIN IT'**

- ALL ENTRIES MUST BE ACCOMPANIED BY A SIGNED ENTRY FORM
- ALL ENTRY FORMS TO BE COMPLETED BY THE EXHIBITOR
- SEPARATE FORM FOR EACH SECTION [NOT CLASS] PLEASE.

Forms available at [www.millmerranshowsociety.com](http://www.millmerranshowsociety.com)  
or  
Millmerran Newsagency.

- PERSONS WATCHING WHILE JUDGING IS IN PROGRESS *MUST REMAIN SILENT AND NOT SPEAK TO THE JUDGE UNTIL THAT SECTION IS FINISHED*
- PRIZE MONEY TO BE COLLECTED FROM PAVILION OFFICE DURING SHOW WEEKEND [TIMES TO BE ADVISED] - WITH THE EXCEPTION OF SCHOOLWORK, WHICH WILL BE HANDED OUT AT SCHOOL
- ALL EXHIBITS & TROPHIES *MUST* BE COLLECTED SUNDAY AFTERNOON BETWEEN 4.00PM & 4.30PM

THANK YOU

*Lavender*



# SECTION - ART

**Stewards:** Lexie Antonio - 46954094 / 0409954015  
Leah Collins - 0427951868 Julie Schutt - 46957124 Leesa Antonio - 0427725245

## **PLEASE NOTE: TIMES FOR RECEIVAL OF ENTRIES**

**Entries to be delivered to the ART PAVILION, MILLMERRAN SHOWGROUNDS BETWEEN 9.00AM AND 4.00PM THURSDAY 29 MARCH 2024.**

**Please note \*\* If you bring in your Art on Friday it will NOT be accepted\*\***

JUDGING TO COMMENCE AT 1.00PM FRIDAY 1 MARCH 2024

Stewards reserve the right to reclassify or reject any entry.

Stewards will exercise all reasonable care with entries; **however** they will not be responsible for loss or damage while the entries are in their custody.

**NB: ALL ENTRIES MUST BE READY FOR HANGING, ie; WITH CORD OR WIRE ATTACHED ACROSS BACK. WORKS ON PAPER MUST BE FRAMED OR FIRMLY MOUNTED. THIS APPLIES TO ALL CLASSES INCLUDING JUNIOR ART.**

Exhibitors name, address, title, class number and price (or NFS) must be shown on the back of all exhibits. Commission on sales will be 15%.

The longest side of any entry is not to exceed 130cm. (Including frame)

**NB: ENTRIES MUST BE ORIGINAL AND BONA FIDE WORK OF THE EXHIBITOR, EXECUTED WITHIN THE LAST 2 YEARS, AND MUST NOT HAVE BEEN EXHIBITED IN A PREVIOUS MILLMERRAN SHOW.**

Exhibitors to be limited to no more than TWO entries per class.

The Judges decision is final.

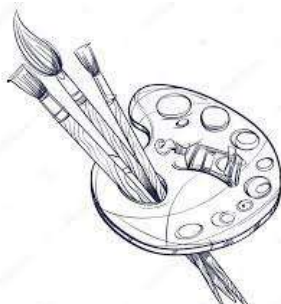
**Entries to be collected from the ART PAVILION between 2.00pm and 4.00pm on SUNDAY 3 MARCH 2024. Please make arrangements if you are unable to pick up your Art on that day!**

**Trophy for Champion Painting of the Show** (all entries eligible).

The Kenneth Macqueen Memorial Trophy donated by R.R. & E.L. Macqueen (Value \$200)  
Champion Ribbon

**Trophy for Best Local Work** The Wyn Saal Memorial Trophy donated by the Saal Family

**Peoples Choice Award** donated by Lexie Antonio from LexArt Studio (Value \$100)



Entry Fees include GST

Prize Money does NOT include GST

**Entry Fee Class 1 - 3 \$3.00**

**Classes 4 - 6 \$2.00**

CLASS

- 1 OPEN Any subject / Any medium  
First Prize \$75 Second Prize \$25  
**\$100 Prize Money donated by Robin & Cecelia Krieg**
- 2 CONTEMPORARY Any medium  
First Prize \$75 Second Prize \$25  
**\$100 Prize Money donated by Mr Paul Antonio**
- 3 WATERCOLOUR (or PEN & WASH) Any Subject  
First Prize \$50 Voucher Second Prize \$25  
**\$50 Voucher donated by Murray's Art & Framing**
- 4 STILL LIFE OR NATURE STUDY Any medium  
First Prize \$50 Second Prize \$25  
**\$75 Prize Money donated by Clifford & Julie Schutt**
- 5 DRAWING Any Subject  
First Prize \$50 Second Prize \$25  
**\$50 Prize Money donated by Millmerran Pharmacy**
- 6 PORTRAIT Any medium  
First Prize \$50 Second Prize \$25  
**\$50 Prize Money donated by Paul & Leanne Brittan**



# ART - JUNIOR

**Stewards:**  
Leah Collins - 0427951868

Lexie Antonio - 46954094 / 0409954015  
Julie Schutt - 46957124

Leesa Antonio - 0427725245

## **PLEASE NOTE: TIMES FOR RECEIVAL OF ENTRIES**

Entries to be delivered to the **ART PAVILION**, MILLMERRAN SHOWGROUNDS **BETWEEN 9.00AM AND 4.00PM THURSDAY 29 FEBRUARY 2024.**

**Please note\*\* NO ENTRIES WILL BE ACCEPTED ON FRIDAY\*\***

JUDGING TO COMMENCE AT 1.00PM FRIDAY 1 MARCH 2024

ALL ENTRIES TO BE COMPLETED AWAY FROM SCHOOL

Entries must be the original work of the Artist - NOT copied

**NB: ALL ENTRIES MUST BE READY FOR HANGING, ie: WITH CORD OR WIRE ATTACHED ACROSS BACK. WORKS ON PAPER MUST BE FRAMED OR FIRMLY MOUNTED. THIS APPLIES TO ALL CLASSES INCLUDING JUNIOR ART.**

**NO ENTRIES WILL BE ACCEPTED THAT CAN NOT BE HUNG CORRECTLY !!! NO EXCEPTIONS**

**(PLEASE REFER TO REGULATIONS AS LISTED AT BEGINNING OF ART SECTION)**

Entry Free

Prize Money            First    \$25                    Second    \$15                    Third    \$10

CLASS

- |    |   |             |                 |
|----|---|-------------|-----------------|
| 7  | PAINTING  | Any Subject | 6 years & under |
|    | \$50 Prize Money kindly donated by <b>LexArt Studio</b>             |             |                 |
| 8  | DRAWING   | Any subject | 6 years & under |
|    | \$50 Prize Money kindly donated by <b>Sophie Twidale Art</b>        |             |                 |
| 9  | PAINTING  | Any subject | 7-10 years      |
|    | \$50 Prize Money kindly donated by <b>Kir-Roy Contracting</b>       |             |                 |
| 10 | DRAWING   | Any Subject | 7-10 years      |
|    | \$50 Prize Money kindly donated by <b>Andrew &amp; Leah Collins</b> |             |                 |
| 11 | PAINTING  | Any Subject | 11-14 years     |
|    | \$50 Prize Money kindly donated by <b>Andrew &amp; Leah Collins</b> |             |                 |
| 12 | DRAWING   | Any Subject | 11-14 years     |
|    | \$50 Prize Money kindly donated by <b>Perry Screening</b>           |             |                 |
| 13 | PAINTING  | Any Subject | 15-17 years     |
|    | \$50 Prize Money kindly donated by <b>Perry Screening</b>           |             |                 |
| 14 | DRAWING   | Any Subject | 15-17 years     |
|    | \$50 Prize Money kindly donated by <b>Darcie Harris</b>             |             |                 |



### **Trophy for Champion Exhibit**

**The John Heckels Memorial Trophy kindly donated by Vivienne Heckels  
Champion Ribbon**

**Encouragement Award kindly donated by Millmerran Newsagency**

# SECTION - FLORAL ART

Stewards: Katrina Grundon - 0428951425

Shirley Gunning - 0498730149

**Stewards would like ENTRIES to be listed by 4.30pm THURSDAY 29 February 2024 as this allows planning for space - but EXHIBITS can be brought in up to 9.30am Friday 1 March 24**

**Pavilion open: Tuesday 12.30pm - 4.30pm Wednesday and Thursday 9.30am - 4.30pm..**  
**Separate Entry Form for each Section (Not Class), please.**

**Entries must be staged by 10.00am Friday 1 March 2024**

**NO ENTRIES TO BE REMOVED BY EXHIBITORS.**  
**STEWARDS WILL GIVE ALL ENTRIES TO THE EXHIBITOR BETWEEN 4.00PM - 4.30PM ON SUNDAY 3 MARCH 2024**

## **CONDITIONS**

No artificial plant material permitted.

Additional Foliage, Drapes, Bases and accessories may be used unless otherwise stated.

Artificially coloured and preserved plant material allowed.

## **DEFINITION OF PLANT MATERIAL FROM THE AUSTRALIAN FLORAL ART**

### **ASSOCIATION MANUAL:**

Any vegetable matter including fresh, dried, preserved, native, and made up plant material, flowers, foliage, fruit, vegetables, air and marine plants. All may be artificially coloured unless prohibited by the show schedule.

Entry Fees include GST

Prize Money does NOT include GST

## **OPEN SECTION**

**Entry Fee .50 cents**

**Prize Money First \$5 Second \$3**

**Trophy for Champion Design, Joyce Jones Memorial, donated by John Jones**  
**Champion Ribbon**

**Trophy for Most Creative Design, Jeanette Hutson Memorial**  
**donated by Millmerran Arts & Crafts**

## **CLASS**

1. In Shades of Lavender and Purple
2. A Wreath [this will be hung on peg board, or the likes]
3. Twisted and Tangled
4. Basic Modern



## NOVICE SECTION

For exhibitors who have not won a prize at a previous Millmerran Show Floral Art Section

Please read Entry Details and Conditions on previous page

Entry Fee                   .50 cents  
Prize Money                First \$5            Second \$3

5. In Shades of Lavender and Purple
6. 3 Flowers, Twigs and Foliage

## JUVENILE SECTION 12 YEARS & UNDER

Please read Entry Details and Conditions on previous page

Entry Free

Prize Money                First \$5            Second \$3    Third \$2  
Donated by Captains Mountain Wind Farm

Trophy for Champion Exhibit donated by Shirley Gunning  
Champion Ribbon

## UNDER SCHOOL AGE - 5 YEARS

7. My Creature - made from plant material.\*\*
8. A Mother's Day Card with pressed or dried flowers [see note below]

## 6 - 12 YEARS

9. A Mother's Day Card with pressed or dried flowers [see note below]
10. My Creature - made from plant material\*\*
11. Miniature Garden 'Where Dragons Dwell', using a small tray or similar as a base \*

**\*\* Classes 7 & 10** Creatures must be made predominately from plant material and are only to be displayed on their own, or on a paper/plastic plate

**\* Class 11** Whilst accessories such as Dragons are permitted, your plant material should dominate the garden.

**NOTE:** here is a Website that shows you how you can successfully press flowers in the microwave for quicker pressing.

<https://studiodiy.com/diy-pressed-flower-art-how-to-press-flowers-in-microwave/>



# SECTION - FOOD & COOKERY

**Stewards:** Fay Schwarten - 0419673279  
Judy Hedges - 46951146 Kay McKinlay - 46951483 Tracey Cooper

**Entries must be listed by 4.30pm Thursday 29 FEBRUARY 2024**

**Separate Entry Form for each Section (Not Class), please.**

**Exhibits can be brought in up to 9.30am Friday 1 MARCH 2024**

**Pavilion open: Tuesday 12.30pm - 4.30pm Wednesday and Thursday 9.30am - 4.30pm..**

Judging commences 10.00am Friday 1 MARCH 2024

**NO ENTRIES TO BE REMOVED BY EXHIBITORS. PAVILION CLOSSES 3.00PM SUNDAY  
3 MARCH 2024. EXHIBITS TO BE COLLECTED BETWEEN 4.00PM - 4.30PM SUNDAY**

**Entry Fee: .50 cents**

**Prize Money: First \$5 Second \$3 except where otherwise stated.**

Entry Fees include GST

Prize Money does NOT include GST

**HINTS FOR SHOW COOKERY** - Show cookery is judged on neatness of entry as well as taste and texture etc. Scones - dust off excess flour. Cool cakes on a tea towel not directly on a wire rack. Approx size for Pikelets 6 cm Anzac biscuits 6 cm and Lamingtons and Slice 5cm square. Icing for cakes pale not bright. Apply a thin layer and don't use decoration e.g. coconut etc. (Unless the schedule states decorated cake)

ALL CAKES COOKED IN 20CM TINS UNLESS OTHERWISE STATED

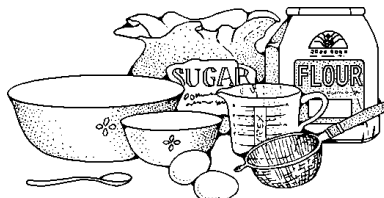
BAR TIN SIZE 21CM X 11CM

LOAF TIN SIZE 22CM X 15CM

- Yvonne Muir Memorial Trophy donated by Ian & Liza Muir for Champion Cake
- Trophy donated by Katrina & Dean Grundon for Most Successful Exhibitor Cat. A
- Trophy donated by Fay Schwarten for Champion Jar Jam or Marmalade Cat. B
- Trophy donated by Fay Schwarten for Champion Jar Relish, Sauce or Chutney Cat. B
- Trophy donated by Tracey Cooper for Champion Fruit Cake to be selected from Classes 9,10 and 11
- Trophy donated by Pittsworth Betta Home Living for Best Exhibit Classes 1 & 2 (Loaf of Bread)
- Trophy donated by Matt & Kassie Clark for Highest Points in Novice Classes 41-43

**Donations towards Prize Money:**

Australian Camp Oven Festival Committee	\$10	Damper
Schaumburg Family - in Memory of Mae Schaumburg	\$20	Pumpkin Fruit Cake
Margaret Stevens	\$10	Sultana Cake
Colleen Mundt	\$10	Orange Bar Cake
Sam Weaver	\$10	Novice Scones
IGA Millmerran	Voucher \$10	Pumpkin Scones
IGA Millmerran	Voucher \$10	Sponge Sandwich
Foodworks Millmerran	Voucher \$10	Coconut Ice
Foodworks Millmerran	Voucher \$10	Marshmallow





## CATEGORY A

### CLASS

#### BREAD & SCONES

- |   |                                 |                   |
|---|---------------------------------|-------------------|
| 1. Loaf of Bread - Handmade                           | <b>First Prize \$5</b>          | <b>Second \$3</b> |
| 2. Loaf of Bread - Bread Maker                        | <b>First Prize \$5</b>          | <b>Second \$3</b> |
| <b>Best Overall Exhibit Classes 1 &amp; 2</b>         |                                 |                   |
| <b>Trophy donated by Pittsworth Betta Home Living</b> |                                 |                   |
| 3. Damper   | <b>First Prize \$10</b>         | <b>Second \$3</b> |
| 4. Plain Scones (4)                                   |                                 |                   |
| 5. Pumpkin Scones (4) - Recipe below                  | <b>First Prize \$10 Voucher</b> | <b>Second \$3</b> |
| 6. Date Loaf (bar tin)                                |                                 |                   |

#### **Pumpkin Scones**

1 tbsp Butter	½ cup Sugar
1 Egg	1 cup mashed and strained Pumpkin
2 ¾ cups SR Flour	½ teasp Salt
a little Milk, if required	

Cream butter and sugar. Add egg, then pumpkin and flour. Roll out to about 1.5cm thick. Cut with a 5cm cutter. Bake in a 190 - 200 degree oven.

#### FRUIT CAKES & PUDDINGS - All Fruit Cakes 20 cm tin

- |   |                         |                    |
|---|-------------------------|--------------------|
| 7. (No Class)   |                         |                    |
| 8. Sultana Cake (round or square tin) - Recipe below        | <b>First Prize \$10</b> | <b>Second \$5</b>  |
| 9. Pumpkin Fruit Cake (round or square tin)                 | <b>First Prize \$20</b> | <b>Second \$5</b>  |
| 10. Boiled Fruit Cake (round or square)                     | <b>First Prize \$10</b> | <b>Second \$5</b>  |
| 11. Rich Fruit Cake (not iced 20cm square tin) 250g Mixture | <b>First Prize \$25</b> | <b>Second \$15</b> |
|   |                         | <b>Third \$10</b>  |

***Winner of Rich Fruit Cake eligible to compete at Darling Downs Competition to be held at Dalby on 18 May 2024***

#### **Sultana Cake**

250g Butter	5 eggs
250g Plain Flour	375g Sultanas
250g Sugar	1 teasp. Vanilla
60g SR Flour	pinch Salt

Cream butter and sugar. Add eggs one at a time. Lastly add flour and sultanas. Bake in a 20cm, square or round, tin at 160 degrees for approx.. 2 hours.

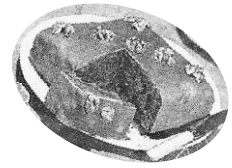
#### CAKES

- |  |                                 |                   |
|--|---------------------------------|-------------------|
| 12. Carrot Cake (20cm round or square tin)                                 |                                 |                   |
| 13. Chocolate Cake (20cm round tin - iced on top only)                     |                                 |                   |
| 14. Sponge Sandwich - (to be joined with fine white icing and iced on top) | <b>First Prize \$10 Voucher</b> | <b>Second \$3</b> |
| 15. Banana Cake (iced on top only)   |                                 |                   |
| 16. Orange Bar Cake (iced on top only)                                     | <b>First Prize \$10</b>         | <b>Second \$3</b> |
| 17. Kentish Bar Cake (bar tin) - Recipe over page                          |                                 |                   |
| 18. Gingerbread (Bar or Loaf Tin)  |                                 |                   |

### Kentish Cake

125g Butter  
2 Eggs  
2 tbsp Cocoa  
¼ cup Sultanas  
30g Cherries chopped

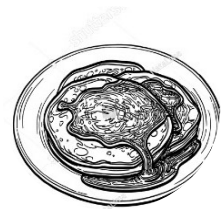
¾ cup Sugar  
1 large cup SR Flour  
½ cup Milk  
30g Walnuts chopped  
2 tbsp Coconut



Cream butter and sugar. Add eggs one at a time. Add dry ingredients alternately with milk. Lastly fold in coconut, fruit and nuts. Bake in bar tin at 180 degrees for 45 minutes

### SLICES - SMALL CAKES - BISCUITS

19. Lamingtons (4) Iced
20. Patty Cakes - Not in papers - Can be cooked in Muffin Tins - Iced (4)
21. Pikelets (4)
22. Date Slice (4)
23. Jam Drops (4)
24. Anzac Biscuits (4)
25. Ginger Nuts (4)
26. Muffins - using a Packet Mix - packet to accompany entry



### **CATEGORY B**

#### **BOTTLE SIZE FOR JAMS & PICKLES: 1-1½ CUPS**

Judges have the right to open jars and bottles

27. Mustard Pickles
28. Chutney
29. Tomato Relish
30. Any other variety Sauce or Pickles
31. Marmalade
32. Peach Jam
33. Grape Jam
34. Fig Jam
35. Plum Jam
36. Tomato Jam
37. Apricot Jam
38. Collection of Jams (3 varieties) **First Prize \$5**
39. Lemon Butter
40. Any other variety Jam



**Second \$3 Third \$2.**



*Raspberry Jam*

## CATEGORY C



### NOVICE

FOR ANY EXHIBITOR WHO HAS NOT WON A PRIZE IN THE FOOD AND COOKERY SECTION AT THE MILLMERRAN SHOW

41. Boiled Fruit Cake

42. Chocolate Cake (20cm round tin - iced on top only) - Recipe below

43. Plain Scones (4)

**First Prize \$10**

**Second \$5**

**Third \$3**

### Chocolate Cake

1 cup SR Flour  
1 cup Sugar  
½ teasp. Vanilla  
2 Eggs

¼ cup Cocoa  
½ cup Milk  
125g Butter

Beat all ingredients together for 6 minutes. Bake in 20cm round tin at 180 degrees



## CATEGORY D

### CONFECTIONARY

44. Coconut Ice (6 squares)

45. Marshmallow (6 squares)

**First Prize**

**\$10 Voucher**

**Second \$3**

**First Prize**

**\$10 Voucher**

**Second \$3**



# COOKERY FOR SCHOOL CHILDREN

**NO ENTRIES TO BE REMOVED BY EXHIBITORS. PAVILION CLOSES 3.00PM SUNDAY 3 MARCH 2024.  
EXHIBITS TO BE COLLECTED BETWEEN 4.00PM - 4.30PM SUNDAY.**

All Exhibits to be the bona fide work of the Exhibitor (open to all boys & girls)

## CATEGORY E

### ENTRY FREE

Prize Money: First \$5 Second \$3 Third \$2 unless otherwise stated.  
Donated by Captains Mountain Wind Farm

- Trophy donated by Annie Muir for Champion Exhibit Category E Champion Ribbon  
Donations towards Prize Money  
\$10 donated by Kay McKinlay for First Prize Class 52 (Pikelets)  
\$10 Voucher donated by Foodworks Millmerran for First Prize Class 53 (Scones)  
\$10 donated by Kay McKinlay for First Prize Class 55 (Muffins)  
\$10 donated by Desley Twidale for First Prize Class 57 (Chocolate Cake)

### PREP & UNDER

- 46. 1 Decorated Biscuit (Girls)
- 47. 1 Decorated Biscuit (Boys)
- 48. Own choice - (3) either Biscuits, Slice, or Patty Cakes (iced)



### 7 YEARS & UNDER

- 49. 1 Decorated Muffin (Girls)
- 50. 1 Decorated Muffin (Boys)
- 51. Own Choice - (3) either Biscuits, Slice, or Patty Cakes (iced)

### 8 TO 13 YEARS

- |  |                          |            |           |
|--|--------------------------|------------|-----------|
| 52. Pikelets (4)   | First Prize \$10         | Second \$3 | Third \$2 |
| 53. Scones (4)   | First Prize \$10 Voucher | Second \$3 | Third \$2 |
| 54. Anzac Biscuits (4)   |                          |            |           |
| 55. Muffins (4)  | First Prize \$10         | Second \$3 | Third \$2 |
| 56. Own Choice (3) - either Biscuits, Slice, or Patty Cakes (iced) |                          |            |           |
| 57. Chocolate Cake (20cm round tin)                                | First Prize \$10         | Second \$3 | Third \$2 |

## CATEGORY F

### 14 TO 17 YEARS

### ENTRY FREE

Prize Money: First \$5 Second \$3 Third \$2 unless otherwise stated  
Donated by Captains Mountain Wind Farm

- Trophy donated by David & Robbie Curtis for Champion Exhibit Category F  
Champion Ribbon



### Donations towards Prize Money

- \$10 donated by Fay Schwarten for First Prize Class 58 (Scones)
- \$10 donated by David & Robbie Curtis for First Prize Class 60 (Pikelets)
- \$10 donated by Judy Hedges for First Prize Class 63 (Chocolate Cake)

- |   |                  |            |           |
|---|------------------|------------|-----------|
| 58. Scones (4)  | First Prize \$10 | Second \$3 | Third \$2 |
| 59. Anzac Biscuits (4)  |                  |            |           |
| 60. Pikelets (4)  | First Prize \$10 | Second \$3 | Third \$2 |
| 61. Muffins - baked in tins (4)                                 |                  |            |           |
| 62. Own Choice - (3) either Biscuits, Slice, Patty Cakes (iced) |                  |            |           |
| 63. Chocolate Cake (20cm round tin)                             | First Prize \$10 | Second \$3 | Third \$2 |

# SECTION - HANDICRAFT

**Stewards:** Lyn Haslam - 0448349199  
Rita Perry - 0428954184 Liz Charlton

**Entries must be listed by 4.30pm Thursday 29 FEBRUARY 2024**

**Separate Entry Form for each Section (Not Class), please.**

**Exhibits can be brought in up to 9.30am Friday 1 March 2024**

**Pavilion open: Tuesday 12.30pm - 4.30pm Wednesday and Thursday 9.30am - 4.30pm..**

**Judging commences 10.00am Friday 1 March 2024**

**NO ENTRIES TO BE REMOVED BY EXHIBITORS. PAVILION CLOSSES 3.00PM SUNDAY 3 MARCH 2024. EXHIBITS TO BE COLLECTED BETWEEN 4.00PM - 4.30PM SUNDAY.**

All exhibits must be completed ready for use and clean. No pieces of work may be entered in more than one class. All exhibits to be the bona fide work of the exhibitor. ALL WORK MUST BE NEW AND COMPLETED SINCE LAST SHOW with the exception of articles previously entered in 'Handicraft Competition Section'. Work must not have been in use prior to showing

**Entry Fee .50cents**

**Prize Money**

**First \$5**

**Second \$3**

Unless otherwise stated

Entry Fees include GST

Prize Money does NOT include GST

**Kate Goodson Memorial Trophy for Most Successful Exhibitor donated by F & C Page  
Trophy for One Woman's Exhibit donated by Matt & Kassie Clark  
Trophy for Champion Handicraft (Softcraft) donated by Anthony's Dalby  
Trophy for Champion Handicraft (Hardcraft) donated by Betty Caldicott  
Trophy for First Prize Class 3 (Cushion) donated by Josie Peardon  
Encouragement Award donated by Handicraft Stewards**

## CLASS

- |    |  |                           |                         |
|----|--|---------------------------|-------------------------|
| 1  | Decorated Household Article (eg Photo Frame, Boxes, Flower Pot, etc) |                           |                         |
| 2  | Bead Work / Button Work  |                           |                         |
| 3  | Cushion  | <b>First Prize Trophy</b> | <b>Second Prize \$3</b> |
| 4  | Toy - knitted / crocheted  |                           |                         |
| 5  | Toy - any other medium   |                           |                         |
| 6  | Dressed Doll - <i>clothing only, judged</i>                          |                           |                         |
| 7  | Doorstop / Breeze Stop   |                           |                         |
| 8  | Shopping Bag - any medium  |                           |                         |
| 9  | Something New from Something Old - Story attached                    |                           |                         |
| 10 | Cream & Creative   |                           |                         |
| 11 | Pink & Pretty  |                           |                         |
| 12 | Blue & Beautiful   |                           |                         |
| 13 | Black & White  |                           |                         |



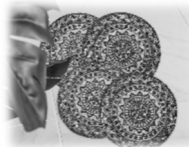
**FIRST Prize Money for Classes 14 - 17 donated by Liz Charlton**

**First Prize \$10**

**Second Prize**

**\$3**

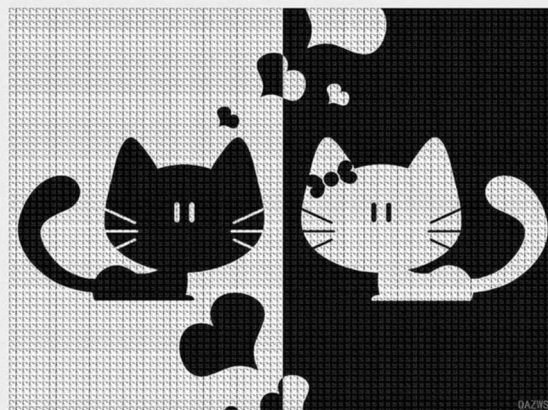
- |    |  |  |  |
|----|--|--|--|
| 14 | Something for the Kitchen (eg Pot Mitt, Tablecloth, Place Mat, Apron, etc)                 |  |  |
| 15 | Something for the Bathroom (eg Washer, Towel, Toilet Bag, Mat, etc)                        |  |  |
| 16 | Something for the Craft Room (eg Pin Cushion, Needle/Scissor Keep, etc)                    |  |  |
| 17 | Something for the Nursery (eg Nappy Bag, Bib, Embroidered Singlet, Clothing for 2 yrs & U) |  |  |
| 18 | Novelty Article - Fun / Decorative   |  |  |
| 19 | Novelty Article - Functional   |  |  |
| 20 | Dress Hanger   |  |  |
| 21 | Covered Book   |  |  |
| 22 | Birthday Card  |  |  |
| 23 | Christmas Card   |  |  |
| 24 | Greeting / Celebration Card  |  |  |
| 25 | Christmas Item   |  |  |





- 26 Woodwork - Fun or Decorative  
27 Woodwork - Functional  
28 Woodwork - by persons 17 yrs & under **Entry Free**  
**Prize Money Donated by Captains Mountain Wind Farm**
- 29 Any Article not mentioned - Hardcraft  
30 Any Article not mentioned - Softcraft  
31 One Woman's Exhibit - 4 distinctly different articles of Needlework or Craft  
**First Prize Trophy                      Second \$10**
- 32 Any Handicraft done by persons 70 years & over. *If willing, persons age to be noted on entry.*  
33 Any Handicraft by person 17 years & under **Entry Free**  
**Prize Money Donated by Captains Mountain Wind Farm**
- 34 Adult Colouring - Pencil, Pen, Paint. Mounted  
35 Scrapbooking - any Item  
36 Paint by Number - any paint by number or sip and paint Item  
[no more than 2 entries per person]. Entries to be no larger than 40x30cm  
**Prize Money for Classes 35/36 donated by Katrina & Bobby Sauverain**
- 37 Jewellery Item - any Medium
- 38 **HANDICRAFT CHALLENGE**
- Garden Ornament any Medium (eg Recycled Wood, Horseshoes, Metal, Welding, etc)  
**First Prize \$25                      Second Prize \$15                      Third Prize \$10**  
**Donated by Lyn Haslam**
- 39 Diamond Art - Framed 30cm x 30cm or smaller  
40 Diamond Art - Framed larger than 30cm x 30cm  
41 Paper Craft - (eg Origami, Quilling etc )

**CHALLENGE**



# SECTION - HANDICRAFT JUNIOR

Stewards: Wendy Folker - 0429702164 Annette O'Sullivan - 46954175

**EXHIBITS MUST BE ENTERED AND RECEIVED by 4.30pm Thursday 29 FEBRUARY 2024**

**Separate Entry Form for each Section (Not Class), please.**

**Pavilion open: Tuesday 12.30pm - 4.30pm Wednesday and Thursday 9.30am - 4.30pm..**

Judging commences 10.00am Friday 1 March 2024

**NO ENTRIES TO BE REMOVED BY EXHIBITORS. PAVILION CLOSES 3.00PM SUNDAY 3 MARCH 2024. EXHIBITS TO BE COLLECTED BETWEEN 4.00PM - 4.30PM.**

Washed Articles allowed.

**All Work must be Original and Entrants Own unaided Work.**

<u>Entry Free</u>	<u>Prize Money</u> Unless otherwise stated	First \$5	Second \$3	Third \$2
-------------------	---	-----------	------------	-----------

Donated by Captains Mountain  
Wind Farm

## **5 YEARS & UNDER**

**Trophy donated by Hair Expressions for Champion Exhibit**

**Champion Ribbon**

### **CLASS**

- 1 Hand Puppet with creative designs - made with cut out felt and stuck onto a paddle pop stick.  
*Other than gluing, all work to be inspired and completed by Child*
- 2 Collage with craft materials - to be created and stuck onto a A4 sheet (any design)  
eg: gum nuts, material, scrunched paper
- 3 Happy Rock - 3 on a plate (for ideas check out Happy Rocks Millmerran Facebook page)  
**Prize Money donated by Graham & Annette O'Sullivan**
- 4 Beaded Bracelet
- 5 Playdough - something made from playdough [any design] eg craft materials, gum nuts, leaves etc

## **6 - 12 YEARS**

**Trophy donated by Revan & Wendy Folker for Champion Exhibit.**

**Champion Ribbon**

### **CLASS**

- 6 Birthday Card - made with Craft Materials
- 7 A4 Colouring in - Hand drawn own design using Colouring Pencils, Crayons or Felt Pens
- 8 Colouring in on stencilled background page. A4 or smaller size
- 9 6-8 years: Design an Outfit made from felt/material. Attach to A4 cardboard and name your design. Design to be own creation.
- 10 9-12 years: Design a Room - made with felt and craft materials - in a shoe box.  
Doll house furniture is acceptable but must fit in the shoe box  
**Prize Money for Classes 9 & 10 donated by Matt & Kass Clark**
- 11 Lego - 6-8 Years - original Lego creation must be entered on base board 40cm square  
**First Prize \$12 Second Prize \$8 Third Prize \$5**
- 12 Lego - Year 9-12 Years - original Lego creation featuring a display you have seen at the Millmerran Show must be entered on base board 40cm square  
**First Prize \$12 Second Prize \$8 Third Prize \$5**  
**Prize Money for Classes 11 & 12 donated by Rebecca & Scott Kirby**
- 13 Necklace - own design made with beads
- 14 Happy Rock - 5 on a plate - 6-8 Years
- 15 Happy Rock - 5 on a plate - 9-12 Years  
**Prize Money for Classes 14 & 15 donated by Graham and Annette O'Sullivan**

## **13 - 17 YEARS**

**Trophy donated by C & D McKinlay & family for Champion Exhibit.**

**Champion Ribbon**

### **CLASS**

- 16 Sewn Item - created for casual wearing
- 17 Birthday Card 3D Image (must be raised up on the paper) using Craft Materials
- 18 Jewellery - Necklace and Earrings Set  
**Prize Money donated by Graham & Annette O'Sullivan**



# SECTION - HANDICRAFT COMPETITION

Stewards: Lyn Haslam - 0448349199  
Rita Perry - 0428954184 Liz Charlton



**THIS SECTION IS NOW OPEN TO ORGANIZATIONS, GROUPS and INDIVIDUALS.**

**Intending Exhibitors please nominate early as there are only a certain number of Display Spaces**

**DISPLAY TO BE STAGED BY 10 00AM FRIDAY 29 FEBRUARY 2024 - Props allowed**

**TO BE JUDGED Friday 1 MARCH 2024**

***NO ENTRIES TO BE REMOVED BY EXHIBITORS. PAVILION CLOSES 3.00PM SUNDAY 3 MARCH 2024. EXHIBITS TO BE COLLECTED BETWEEN 4.00PM - 4.30PM SUNDAY***

Entry Fees include GST

Prize Money does NOT include GST

**Entry Fee \$1**

**Prize Money First \$50.00 Second \$30.00 Third \$20.00**

**Sashes awarded for First, Second and Third**

**Madge Folker Memorial Trophy for Champion Article in Section donated by  
Revan and Wendy Folker Champion Ribbon**

**Donations towards prize money:**

- **Millmerran Arts and Crafts**
- **Millmerran Commerce & Progress Inc**

**8 Different Items of Craft in each display**

**All Articles to be new each year.**

**Articles to be named.**

**Each Display to arrange backdrop of choice.**

**Overall Presentation will be judged first and points awarded thereafter.**

Points: For each article (8 different items)	10 =	80
For display - <i>use of Props recommended, to enhance Display</i>		20
	<b>TOTAL POINTS</b>	<b>100</b>





# SECTION - HORTICULTURE

Stewards Cheryl King - 0456820944  
Desley Smith Melissa Holland Jan Gayner Margaret Arnold

**ALL ENTRIES and EXHIBITS will be taken on FRIDAY morning 1 MARCH 2024 between 7.30am - 9.30am. Separate Entry Form for each Section (Not Class), please.**

Judging commences 10.00am Friday 1 March 2024

**NO ENTRIES TO BE REMOVED BY EXHIBITORS. PAVILION CLOSES 3.00PM SUNDAY 4 MARCH 2024. EXHIBITS ARE TO BE COLLECTED BETWEEN 4.00PM - 4.30PM.**

Entry Fees include GST Prize Money does NOT include GST  
**Entry Fee .50 cents all classes unless otherwise stated**  
**Prize Money First \$5 Second \$3**

**Trophy for Most Successful Exhibitor in Section donated by Foodworks Millmerran**  
**Trophy for Champion Cut Flower donated by Millmerran Garden Club Champion Ribbon**  
**Tim Thornton Memorial Trophy donated by Phil & Pam Thornton for Champion Rose**  
**Champion Ribbon**  
**Trophy for Champion Pot Plant donated by Desley Smith Champion Ribbon**

**DISTINCT DEFINITIONS** - Distinct Species or Kinds: In the Cut Flower Sections, this indicates that only one representative of any genus may be included, ie one Rose, one Dahlia, one Delphinium etc.

In the Pot Plant section, Distinct Kinds would mean - one Adiantum, one Davallia, and one Polypodium etc.

**DISTINCT VARIETIES** - Means that flowers or plants of the same species may be used, i.e. in Roses - Peace, Virgo, etc.; Ferns - Adiantum, Nebulosum, and Gloria Moordrecht etc; and in Cut Flowers - Iceland Poppies, Shirley Poppies etc.

**ALL ENTRIES SUBMITTED MUST BE ITEMS GROWN BY THE EXHIBITOR**

## FLOWERS

**NB: BOTTLES ARE SUPPLIED FOR ALL EXHIBITS - DO NOT USE VASES OR GLASSES**

### CLASS

1. Rose 1 any colour
2. Roses 3 distinct
3. Rose 1 head of Polyanthus or Floribunda
4. Roses 3 - one variety in three stages bud to full bloom
5. Roses 3 Miniatures - 3 stems each a different colour
6. Rose 1 single Miniature
7. Rose 1 full head Miniature
8. Roses 3 stems - 3 colours Floribunda
9. **Champion Rose - selected from above classes.**  
1 Yellow Flower - other than a Rose (stem or head allowed)
10. 1 Red Flower - other than a Rose (stem or head allowed)
11. 1 Pink Flower - other than a Rose (stem or head allowed)
12. Geraniums 4 Zonal
13. Geraniums 4 Ivy
14. Collection of Geranium Foliage - 4 varieties
15. Creeper 1 Spike or Bloom
16. Bougainvillea specimen truss
17. Gerbera 1
18. Zinnias 6
19. Marigolds 1 bloom
20. Marigolds 3 blooms in 1 container
21. Flowering Shrubs 3 distinct to be named - in one container .
22. One Bulbous or Tuberous Flower - stem or head
23. Cut Flower 1 Only. Any other not named - stem, multiple head or bud allowed
24. Collection of Native Flowers - at least 4 different varieties in 1 container



## POT PLANTS

**NB:** Pots not to exceed 19 cm high by 20 cm wide. Shallow pots to be no more than 12cm high by 30cm wide - inside measurements. **POTS MUST HAVE SAUCERS, NO TERRACOTTA POTS OR CERAMIC POTS ALLOWED UNLESS OTHERWISE STATED.**

**ALL ENTRIES SUBMITTED MUST BE ITEMS GROWN BY THE EXHIBITOR FOR AT LEAST THREE MONTHS PRIOR TO THE SHOW**

### CLASS

25. Pot Plant variegated foliage
26. Pot Plant foliage - plain one colour only
27. Coleus Specimen
28. Begonia
29. Begonia Rex
30. Begonia in Flower
31. Pot Plant in bloom other than a Begonia
32. Maiden Hair fine
33. Maiden Hair medium
34. Maiden Hair coarse
35. Hares Foot Fern
36. Bonsai in Bonsai container; may be ceramic **NO more than 30cm square**
37. Specimen Fern fine
38. Specimen Fern medium
39. Specimen Fern coarse
40. Collection of at least 3 different Succulents and/or Cacti in 1 container
41. Bromeliad
42. Prettiest Pot Plant - in small unusual container, may be ceramic.  
Pot and Plant judged and plant must be growing in the Pot.



### JUNIOR SECTIONS

**NB:** Pots not to exceed 19 cm high by 20 cm wide. Shallow pots to be no more than 12cm high by 30cm wide - inside measurements. **POTS MUST HAVE SAUCERS, NO TERRACOTTA OR CERAMIC POTS ALLOWED.**

**Entry Free**

**Prize Money First \$5 Second \$3**

**Donated by Captains Mountain Wind Farm**

12 Years and under

**Trophy donated by Missen Family for Champion Exhibit  
Champion Ribbon**

### CLASS

43. Geranium in a Pot
44. Fern in a Pot
45. Succulent grown in a Teapot

13 - 17 Years

**Trophy donated by Cheryl King for Champion Exhibit  
Champion Ribbon**

46. Geranium in a Pot
47. Fern in a Pot
48. Succulent grown in a Teapot



# SECTION - NEEDLEWORK

**Stewards:** Raelene Antonio 0427371717 Margaret Bennett 46952295  
Christine Vietheer Rose Callagher

**Entries must be listed by 4.30pm Thursday 29 FEBRUARY 2024.**  
**Separate Entry Form for each Section (Not Class), please.**  
**Exhibits can be brought in up to 9.30am Friday 1 March 2024**  
**Pavilion open: Tuesday 12.30pm - 4.30pm Wednesday and Thursday 9.30am - 4.30pm..**

Judging commences 10.00am Friday 1 March 2024

**NO ENTRIES TO BE REMOVED BY EXHIBITORS. PAVILION CLOSES 3.00PM SUNDAY 3 MARCH 2024. EXHIBITS CAN BE COLLECTED BETWEEN 4.00PM - 4.30PM**

All exhibits must be completed ready for use and clean. No pieces of work may be entered in more than one class. All exhibits to be the bona fide work of the exhibitor.

**All work must be new and completed since last show with the exception of articles previously entered in the 'Handicraft Competition' Section. Work must not have been in use prior to showing.**

All class tickets to be attached with strong safety pins.

Entry Fees include GST Prize Money does NOT include GST

**Entry Fee .50cents**  
**Prize Money First \$5 Second \$3**

**Alice Thomson Memorial Trophy for Most Successful Exhibitor in Section donated by Len Thomson.**

**Trophy for Impact Article in Section donated by Raelene Antonio**

**Trophy for Challenge for Over 80's donated by Rita Perry**

**Encouragement Award donated by Lois Lindenmayer**

## CLASS

### CHALLENGE

45

**Challenge for Over 80's**  
Any article in Section by anyone 80yrs & over



## NEEDLEWORK

**Champion Trophy donated by Wednesday Morning Craft**

**Champion Ribbon**

**Voucher for Champion Cross Stitch (Classes 52 - 54) donated by**

**Roy & Maryann Flynn**

**Champion Ribbon**

- 46 Any article hand embroidered with Cotton or Silk
- 47 Any article hand embroidered with Wool
- 48 Candlewick Article
- 49 Canvas Work
- 50 Long Stitch - Framed
- 51 Article in Hand Patchwork [eg Paper Pieced]
- 52 Counted Cross Stitch - Framed Small - Maximum size 26 x 31 cms (10 x 12 ins)
- 53 Counted Cross Stitch - Framed Large - Maximum size 51 x 76 cms (20 x 30 ins)
- 54 Counted Cross Stitch - Unframed (table runner etc)
- 55 Article in hand Appliqué
- 56 Gingham Article (chicken scratching etc)
- 57 Counted Thread Embroidery Unframed (Hardanger etc)
- 58 Zenbroidery
- 59 Decorated Towel - NOT Machine Embroidered
- 60 Sashiko Article
- 61 Ribbon Embroidery Article
- 62 Article with Thread Darning
- 63 Any other needlework - not specified
- 64 Any Needlework done by persons 70 years of age & over. *If willing, persons age to be noted on entry.*



**KNITTING      Champion Trophy donated by Margaret Bennett  
Champion Ribbon**



- 65 Child or Adult Jumper / Cardigan
- 66 Beanie / Hat / Scarf / Cape
- 67 Knee Rug / Bunny Rug
- 68 Any other Knitted Garment or Article (not already mentioned)
- 69 Any Knitting Work done by persons 70 years of age & over.  
*If willing, persons age to be noted on entry*

**CROCHET      Champion Trophy donated by Millmerran Arts and Crafts      Champion Ribbon  
Iris Funk Memorial Trophy for Most Points donated by  
Janelle Caldicott and Sharon Grey**

Work Not to be mounted

- 70 Two Doilies - distinctly different patterns (under 30 cm)
- 71 Table Centre 30 cm & over - using 20 or Finer Thread
- 72 Table Centre 30 cm & over - using 10 or Heavier Thread
- 73 Table Cloth or Runner
- 74 Filet Crochet
- 75 Coloured Knee Rug - no more than 120cm square
- 76 One Handkerchief Edge and/or Corner
- 77 Any other Crochet Article/Garment (not already mentioned)
- 78 Any Crochet work done by persons 70 years of age & over.  
*If willing, persons age to be noted on entry.*



**MACHINE SEWING      Champion Trophy donated by Lyn Haslam  
Champion Ribbon**

- 79 Childs Garment
  - 80 Patchwork Runner, machine quilted
  - 81 Machine Appliqué
  - 82 Machine Patchwork (hand quilting allowed)
  - 83 Machine Embroidery (eg Towels)
  - 84 Any Item Embellished (eg Semiole)
  - 85 Bag Stand alone, structured base
  - 86 Bag (eg. Tote, Craft, Decorative, Patchwork)
  - 87 Article incorporating Chenille Work
  - 88 3 different articles using the same material
  - 89 3 items using different techniques of applique [eg Shadow , Needleturn, Scrappy]
  - 90 Item incorporating Collage
  - 91 Any other Machine Sewn Article or Garment [not already mentioned]
  - 92 Cushion - Entrant 17 years & under      **Entry Free**
  - 93 Any other Item by Entrant 17 years and under      **Entry Free**
- Prize Money for Classes 92/93 donated by Captains Mountain Wind Farm**



**UFO (must be half or more finished - one Item per Entrant per Class)**

**Prize Money donated by Edna Muir**

- 94 UFO - Crochet or Knitting
- 95 UFO - Sewing



# SECTION - PHOTOGRAPHY

Chief Steward: Karen Dieckmann - 0447543149  
Stewards: Jeanette Krinke Kay Dieckmann

**ENTRIES MUST be LISTED and RECEIVED by 4.30pm Thursday 29 February 2024  
NO ENTRIES WILL BE ACCEPTED ON FRIDAY MORNING.  
Separate Entry Form for each Section (Not Class), please.**

**Pavilion open: Tuesday 12.30pm - 4.30pm Wednesday and Thursday 9.30am - 4.30pm..**

Judging commences 9.00am Friday 3 March 2024

**NO ENTRIES TO BE REMOVED BY EXHIBITORS. PAVILION CLOSES 3.00PM SUNDAY  
3 MARCH 2024. EXHIBITS TO BE COLLECTED BETWEEN 4.00PM - 4.30PM.**

Entry Fee: .50 cents

Prize Money: First \$5 Second \$3 Third \$2 Unless otherwise stated

Entry Fees include GST

Prize Money does NOT include GST

Photos to be commercially snapshot size. **15 cms x 10 cms, (6" x 4")** and **mounted on black or white cardboard with a border of 1.5cm**, unless otherwise stated

**Stewards will place photos onto photo boards for display.**

**ALL ENTRIES TO HAVE NAME OF EXHIBITOR ON TOP OF BACK - either written in pencil, or onto self-adhesive label. (This is to avoid damage to Photo by use of biro/ink)**

**Same image can only be used in ONE class.**

**Photos should NOT have dates printed on face.**

**Points judges look for are, Sharpness, Lighting, Composition, Cropping and Exposure.**

Trophies: **CHAMPION COLOUR PHOTO** donated by Len Thomson **Champion Ribbon**  
**CHAMPION PHOTO CLASSES 11&12 [Sunrise/Sunset]**  
**Kellie Curtis Memorial Trophy** donated by Paul Curtis **Champion Ribbon**

**MOST SUCCESSFUL EXHIBITOR** donated by Loo La Belles  
**ENCOURAGEMENT AWARD** donated by Brazil Farming Pty Ltd  
**STEWARDS CHOICE AWARD** donated by Bill Smith Pacific Seeds

## CLASS

- 1 **Colour Photo** Landscape without Water.
- 2 **Colour Photo** Landscape with Water, or, Seascape
- 3 **Colour Photo** Farming/Animals **Prize Money donated by Brazil Farming Pty Ltd**
- 4 **Colour Photo** Farming/Cropping **Prize Money donated by Brazil Farming Pty Ltd**
- 5 **Colour Photo** My Favourite Pet
- 6 **Colour Photo** Animals in the Wild
- 7 **Colour Photo** Bird Study
- 8 **Colour Photo** Study of Person/People [eg Child/Children, Adult/Adults]
- 9 **Colour Photo** Drone Photo - Any Subject
- 10 **Colour Photo** Flower
- 11 **Colour Photo** Sunrise
- 12 **Colour Photo** Sunset
- 13 **Colour Photo** Buildings (I or Several) [eg Historic, Highrise, Modern]
- 14 **Colour Photo** Aspect of Weather [eg Fire, Flood, Cloud etc]
- 15 **Colour Photo** Transport of any kind [Farm, Industry, Personal, Vintage Vehicles]
- 16 **Colour Photo** Sport - Action
- 17 **Colour Photo** Any other subject
- 18 **Colour Photo** My Favourite Holiday /Travel Destination  
**First Voucher Second Voucher Third Voucher**  
**Donated by Westridge Photos**

**CHAMPION COLOUR PHOTO CLASSES 11/12 (SUNRISE/SUNSET)**  
**OVERALL CHAMPION COLOUR PHOTO Classes 1 - 18**

- 19 **Black and White or Sepia** People (1 or more)  
 20 **Black and White or Sepia** Any other subject

**ENLARGEMENTS**

Classes 21 - 25 to be Mounted on Cardboard with a 1.5cm Border around Photo  
 Cardboard Mounts not to exceed 50cms in any direction

**PRIZE MONEY FOR CLASSES 21 - 23 donated by BRAZIL FARMING PTY LTD**

- |    |                           |                         |                   |                    |
|----|---------------------------|-------------------------|-------------------|--------------------|
| 21 | <b>Colour Enlargement</b> | Landscape               | <b>First \$20</b> | <b>Second \$10</b> |
| 22 | <b>Colour Enlargement</b> | Landscape - Agriculture | <b>First \$20</b> | <b>Second \$10</b> |
| 23 | <b>Colour Enlargement</b> | People (1 or more)      | <b>First \$20</b> | <b>Second \$10</b> |

**PRIZE MONEY FOR CLASSES 24 & 25 donated by THE BROOKSTEAD STORE & POST OFFICE**

- |    |                              |                   |                           |                            |
|----|------------------------------|-------------------|---------------------------|----------------------------|
| 24 | <b>Colour Enlargement</b>    | Any other subject | <b>First \$20 Voucher</b> | <b>Second \$10 Voucher</b> |
| 25 | <b>B &amp; W Enlargement</b> | Any subject       | <b>First \$20 Voucher</b> | <b>Second \$10 Voucher</b> |

**INTENDING EXHIBITORS ARE ABLE TO HAVE THEIR PHOTOS PRINTED AT:**

- **Westridge Photos**, Shop 6, 300 West St., Kearney Springs  
 Ph: 46363186      [westfuji@westridgephotos.com.au](mailto:westfuji@westridgephotos.com.au)



# PHOTOGRAPHY - JUNIOR

Chief Steward: Karen Dieckmann - 0447543149  
Stewards: Maree Elsden Leanne Dieckmann

COMPETITORS IN THIS SECTION MUST BE **17 YEARS OF AGE & UNDER** AS AT  
1 MARCH 2024

## **NB:**

**PLEASE REFER TO TOP OF SENIOR SECTION FOR NECESSARY REQUIREMENTS.**

Photos to be commercially snapshot size. **15 cms x 10 cms, (6"x 4")** and mounted on **black or white cardboard with a border of 1.5cm**, unless otherwise stated

**Stewards will place photos onto photo boards for display.**

## **ENTRY FREE**

**Prize Money:** Donated by Captains Mountain Wind Farm  
First \$5 Second \$3 Third \$2 Unless otherwise stated

**Trophies:** CHAMPION COLOUR PHOTO donated by Yondale Designs  
MOST SUCCESSFUL EXHIBITOR donated by Nancy Hegarty  
ENCOURAGEMENT AWARD donated by Frank & Clymene Page  
STEWARDS CHOICE AWARD donated by Bill Smith Pacific Seeds

## **CLASS**

- J 1 **Colour Photo** Landscape without Water
- J 2 **Colour Photo** Landscape with Water, or Seascape
- J 3 **Colour Photo** Study of Person/People [eg Child/Children, Adult/Adults]
- J 4 **Colour Photo** Farming - Animals
- J 5 **Colour Photo** Farming - Cropping
- J 6 **Colour Photo** My Favourite Pet
- J 7 **Colour Photo** Animals in the Wild
- J 8 **Colour Photo** Flower
- J 9 **Colour Photo** Bird Study
- J10 **Colour Photo** Machinery of any kind
- J11 **Colour Photo** Sunrise/Sunset
- J12 **Colour Photo** Buildings [1 or several]
- J13 **Colour Photo** Aspect of Weather [ Not Sunrise/Sunset]
- J14 **Colour Photo** Sport Action
- J15 **Colour Photo** Drone Photo - Any Subject
- J16 **Colour Photo** Any other Subject
- J17 **Colour Photo** NOVICE - Any Subject.



Only for Exhibitors who have NOT won a prize at a previous Millmerran Show

## **CHAMPION COLOUR PHOTO FROM CLASSES J1 - J17**

- J18 **Black and White** Photo - Any Subject

## **ENLARGEMENTS -**

Classes J19 & J20 to be Mounted on Cardboard with a 1.5cm Border around Photo  
Cardboard Mounts not to exceed 50cms in any direction

## **PRIZE MONEY FOR CLASSES J19 & J20 donated by BRAZIL FARMING PTY LTD**

- |     |  |                   |                    |
|-----|--|-------------------|--------------------|
| J19 | <b>Colour Enlargement - Any Subject</b>          | <b>FIRST \$20</b> | <b>SECOND \$10</b> |
| J20 | <b>Black and White Enlargement - Any Subject</b> | <b>FIRST \$20</b> | <b>SECOND \$10</b> |

**INTENDING EXHIBITORS ARE ABLE TO HAVE THEIR PHOTOS PRINTED AT:**

- **Westridge Photos**, Shop 6, 300 West St., Kearney Springs  
Ph: 46363186 [westfuji@westridgephotos.com.au](mailto:westfuji@westridgephotos.com.au)



# SECTION - QUILTS & WALL HANGINGS

Steward: Lois Lindenmayer - 0409983003

**NB: Entries to be listed and delivered to Pavilion by 4.30pm Thursday 29 February 24**  
**Any entries brought in on Friday morning will not be accepted.**

**Separate Entry Form for each Section (Not Class), please.**

**Pavilion open: Tuesday 12.30pm - 4.30pm Wednesday and Thursday 9.30am - 4.30pm..**

**NO ENTRIES TO BE REMOVED BY EXHIBITORS. PAVILION CLOSES 3.00PM**  
**SUNDAY 3 MARCH 2024. EXHIBITS TO BE COLLECTED BETWEEN 4.00PM - 4.30PM.**

**JUDGING COMMENCES 8.30 AM FRIDAY 1 MARCH 2024**

Entry Fees include GST

Prize Money does NOT include GST

**Entry Fee all Classes**

**\$1 unless otherwise stated**

**Prize Money**

**First \$10**

**Second \$8**

**Trophy donated by Katrina & Bobbie Sauverain for Champion Quilt**

**Trophy donated by Millmerran Quilters Group for Reserve Champion Quilt**

**Trophy donated by Helen Antonio for Champion Non Professional Quilt (Classes 1,3, & 5)**

**Encouragement Award donated by Millmerran Quilters Group**

## **Articles:**

- Must **not have been previously entered**
- Must **NOT be more than 2 years old**
- Must have a minimum of a 3" rod pocket (for all quilt items) or will not be entered
- Must be in a clean condition - old and soiled Exhibits will not be accepted
- Must be competitors own work unless otherwise stated
- Must have all threads and fluff removed
- Must NOT have been washed

## **CLASS**

1. Pieced Quilt - non professional
2. Pieced Quilt - commercially quilted
3. Appliqued Quilt - non professional
4. Appliqued Quilt - commercially quilted
5. Pieced/Appliqued Wall Hanging - non professional
6. Hand Embroidered Quilt
7. Machine Embroidered Quilt
8. Pre cut Quilt (eg jelly roll)
9. Small Quilt 45"x 60", or less
10. Art Quilts/textile Art
11. Novice - first time entrant

**CHAMPION QUILT ELIGIBLE TO COMPETE AT STATE FINALS BRISBANE**





# SECTION - SCHOOL WORK

Steward: Nicole Farrington - 0458083783

## ALL PRIZE MONEY & ENTRIES WILL BE HANDED OUT AT SCHOOL AFTER SHOW

ALL SCHOOLWORK CLASSES (PRIMARY & SECONDARY) TO BE AVAILABLE FOR COLLECTION BY 9.00 AM ON WEDNESDAY 28 FEBRUARY 2024

TO BE JUDGED WEDNESDAY 28 FEBRUARY 2024

**Entry Free                      Prize Money                      First \$5                      Second \$3                      Third \$2**  
**Donated by Captains Mountain Wind Farm**

All work to have been done since the 2023 Millmerran Show. Certification by competitor and teacher or parent that work is competitor's own unaided work.

**Name of Exhibitor, School and Show Class Number to be on the back of entries [as below]**  
**Please check class numbers carefully to ensure that the child enters in his/her correct Year level, especially in composite classes.**  
**If Exhibitor has no media permission, please add a RED DOT.**

Students Name: School: Show Class: If Student has <b>no media permission</b> , please add a <b>RED DOT</b>
---

## PRIMARY

**Trophy donated by Millmerran Show Society - Castles Family Memorial Trophy for Champion Work Years 5 & 6                      Champion Ribbon**

**Trophy donated by Beverley and Robert Mackenzie for Champion Work Years 3 & 4                      Champion Ribbon**

**Trophy donated by Pittsworth Sentinel for Champion Work Years 1 & 2                      Champion Ribbon**

Entries in the Primary School Work Section may be kept from March 2023 onwards (i.e. after the 2023 Show) and entered in the 2024 Show. Students will be entered into the Class for the year level in which they are enrolled in 2024, regardless of when the work was completed.

**DISPLAY Handwriting                      Prep** Schools to submit size A3 display containing School Name and Logo with Children's Name and name of their chosen Animal to be handwritten by them.  
*NOT to be judged*

## **CLASS**

- |   |                    |   |
|---|--------------------|---|
| 1 | <b>Handwriting</b> | <b>Year 1</b> Beginner's alphabet<br>Sentence: <b>I enjoy going to the Millmerran Show.</b><br><i>To be on year 1 writing paper [red and blue lines]</i><br><i>To be mounted on a <b>green</b> paper background <b>half</b> A4 size</i>   |
| 2 | <b>Handwriting</b> | <b>Year 2</b> Beginner's alphabet<br>Sentence: <b>I have fun with my friends at the Show</b><br><i>To be on year 2 writing [red and blue lines]</i><br><i>To be mounted on a <b>red</b> paper background <b>half</b> A4 size.</i>   |
| 3 | <b>Handwriting</b> | <b>Year 3</b> Beginner's alphabet or entries and exits<br>Sentence: <b>I enjoy.....at the Show.</b><br>(complete sentence with no more than 5 words).<br><i>To be on year 3 writing paper [red and blue lines]</i><br><i>To be mounted on a <b>light blue</b> coloured background <b>half</b> A4 size</i> |

- |   |                              |               |  |
|---|------------------------------|---------------|--|
| 4 | <b>Poem</b>                  | <b>Year 4</b> | Acrostic poem using the word <b>LIVESTOCK</b><br>One sentence per letter - Handwritten<br>Year 4 blue lines<br>Size A4 paper inserted in <b>clear plastic sleeve</b><br>[will be hung with your Art piece]                                 |
| 5 | <b>Poem</b>                  | <b>Year 5</b> | Acrostic poem using the word <b>AGRICULTURE</b><br>One sentence per letter - Handwritten<br>Year 5 blue lines<br>Size A4 paper inserted in <b>clear plastic sleeve</b><br>[will be hung with your Art piece].                              |
| 6 | <b>Handwritten Paragraph</b> | <b>Year 6</b> | 1 Paragraph on your favourite <b>Local Landmark</b><br>As per Art Piece in Class 13 below<br>Handwritten - 1 A4 page<br>Year 5/6 blue lines<br>Size A4 paper inserted in <b>clear plastic sleeve</b><br>[will be hung with your Art Piece] |

#### Art Work

**NB: \*\*\* All work to be submitted in A4 clear plastic sleeves \*\*\***

#### CLASS

- |    |            |               |                   |   |
|----|------------|---------------|-------------------|---|
| 7  | <b>Art</b> | <b>Prep</b>   | <b>any medium</b> | Subject - <b>My favourite Animal</b><br>A4 sized paper  |
| 8  | <b>Art</b> | <b>Year 1</b> | <b>any medium</b> | Subject - <b>Friends at the Show</b><br>A4 sized paper  |
| 9  | <b>Art</b> | <b>Year 2</b> | <b>any medium</b> | Subject - <b>Friends at the Show</b><br>A4 sized paper  |
| 10 | <b>Art</b> | <b>Year 3</b> | <b>any medium</b> | Subject - <b>Event at the Show</b><br>A4 sized paper  |
| 11 | <b>Art</b> | <b>Year 4</b> | <b>any medium</b> | Subject - <b>Livestock</b><br>A4 sized paper  |
| 12 | <b>Art</b> | <b>Year 5</b> | <b>any medium</b> | Subject - <b>Agriculture</b><br>[as described in Class 5]<br>A4 sized paper                   |
| 13 | <b>Art</b> | <b>Year 6</b> | <b>any medium</b> | Subject - <b>Your favourite Local Landmark</b><br>[as described in Class 6]<br>A4 sized paper |

**Encouragement Awards will be given by Millmerran Arts & Crafts for Art Work Years 1 - 6**

**ALL PRIZE MONEY & ENTRIES WILL BE HANDED OUT AT SCHOOL AFTER SHOW**



## **SECONDARY**

**ALL SCHOOLWORK CLASSES (PRIMARY & SECONDARY) TO BE AVAILABLE FOR COLLECTION BY 9.00 AM ON WEDNESDAY 28 FEBRUARY 2024**

**TO BE JUDGED WEDNESDAY 28 FEBRUARY 2024**

**Name of Exhibitor, School and Show Class Number to be on the back of entries [as below]  
Please check class numbers carefully to ensure that the child enters in his/her correct  
Year level, especially in composite classes.**

**If Exhibitor has no media permission, please add a RED DOT.**

Students Name: School: Show Class: If Student has <b>no media permission</b> , please add a <b>RED DOT</b>
---

**Entry Free**

**Prize Money            First \$5            Second \$3            Third \$2  
Donated by Captains Mountain Windfarm**

**Trophy donated by Paul & Nicole Farrington for First Prize Class 14**

**Champion Ribbon**

**Trophy donated by Pittsworth Sentinel for Champion Exhibit Classes 15 & 16**

**Champion Ribbon**

**Trophy donated by Paul & Nicole Farrington for Champion Exhibit Classes 17 & 18**

**Champion Ribbon**

Entries in the Secondary School Work Section may be kept from March 2023 onwards [i.e. after the 2023 Show] and entered in the 2024 Show. Students will be entered into the Class for the year level in which they are enrolled in 2024, regardless of when the work was completed.

**\*\*\*NB: Work NOT to be mounted as it is too difficult to display.\*\*\***

### **CLASS**

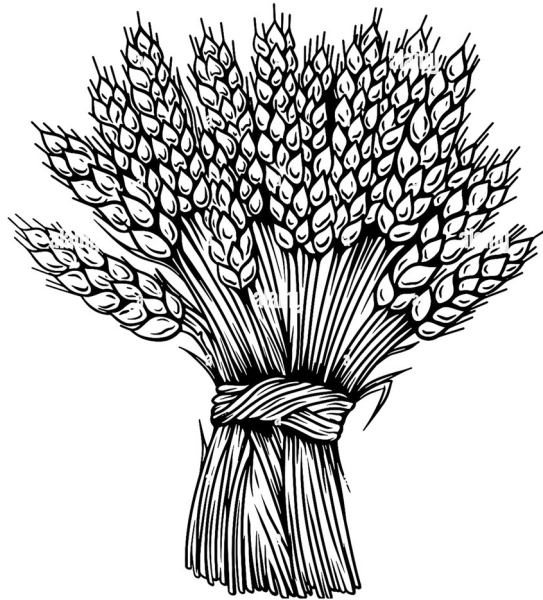
14	<b>Advertisement</b>	<b>Year 7</b>	Poster promoting the <b>88 th Millmerran Show 2025 1 / 2 March 2025</b> <i>Using images provided by Millmerran Show Society</i> <i>[NB: entire Show not just the Rodeo]</i> <i>A4 Size - Colourful</i> <i>Computer generated, inserted in <b>clear plastic sleeve.</b></i> <u>Winning Poster to be used for 2025 Show</u> <u>Promotion &amp; inserted in Millmerran Newsletter</u> <b>First Trophy    Second \$3    Third \$2</b>
15	<b>Creative Writing</b>	<b>Year 8</b>	Computer generated - Subject: <b>Rural Australia</b> must be titled. Max 250 words Font size 14 Times New Roman style Size A4 paper inserted <b>in clear plastic sleeve</b>
16	<b>Creative Writing</b>	<b>Year 9 &amp; 10</b>	Computer generated - Subject: <b>What's happening in the provided picture ?</b> - [please see over page for picture provided by Millmerran Show Society] Must be titled. Max 250 words Font size 14. Times New Roman style Size A4 paper inserted <b>in clear plastic sleeve</b>
17	<b>Art</b>	<b>Year 7 &amp; 8</b>	Any medium - Free choice of subject [eg: Sculpture, Painting, Drawing] If using paper: up to size A3
18	<b>Art</b>	<b>Year 9 &amp; 10</b>	Any medium - Free choice of subject [eg: Sculpture, Painting, Drawing] If using paper: up to size A3





# **PRODUCE PAVILION** **SECTIONS**

***\*\*\* Trophy - Donated by Amelia & Jim Stower  
Awarded to Exhibitor gaining highest points in  
Produce Pavilion***





# SECTION - FARM PRODUCE

Steward: Rebecca Kirby - 0427952336 / 0447955177

## FIELD COMPETITIONS-

**Wheat, Barley, Chickpea and Sorghum**

**Heavy and Light Soil Competition in Wheat, Barley and Sorghum**

Stewards shall use their discretion in the composition of crops that are eligible in field competitions on a seasonal basis. Stewards and judges may alter or restrict the number of entries per section per farm in the field competitions on a season- to-season basis (due to time restraints)

**All entries are to be a minimum of 10ha with a headland included.**

**Field Crop Entry Fees \$10.00 (incl GST)**

**ALL OTHER ENTRIES close 9.30am Friday 1 March 2024** and will be judged Friday 1 March 24

All entries are to be grown by the exhibitor and current season produce. Grain exhibits to be named on containers with variety and the owner to ensure identification.

All grain is to be free of insects.

Any samples containing insects will be disqualified.

**Trophies will be presented in the Produce Pavilion at 1.00pm on Sunday 3 March 2024**

Grain to be judged on the following scale of points: -

Colour 15 Sample 15

Grain Size 15 Purity 15

Weight - 1 point for every kg / Hectolitre

Protein Content for wheat (10 points plus 1.5 points per % above 10% protein)

Entry Fees include GST

Prize Money does NOT include GST

**Entry Fee . 50 cents**

**First Prize \$5 Second \$3 Third \$2**  
Unless otherwise stated

**Sincere thanks to the following Sponsors:**

**Pacific Seeds  
Champion Seeds  
Ray White Rural  
RDO Equipment  
Vary's Agricultural Services  
IOR Rural**

**Pioneer Seeds  
DA Hall & Co  
Sizeco  
Pursehouse Rural  
L. Pfeffer  
Haical Hydraulic**

## **PERPETUAL SHIELDS**

**Field Wheat Competition overall Champion**

**Lyndon Pfeffer Memorial Perpetual Shield  
donated by Pfeffer Family**

**Field Sorghum Competition Champion**

**Nerida Hegarty Memorial Perpetual Shield  
donated by Hegarty Family**

**Most successful Exhibitor Classes 1 - 24**

**Jim Twidale Perpetual Shield donated by  
Pacific Seeds**

**Champion Sheaf of Sorghum**

**Perpetual Shield donated by Pacific Seeds**

**Trophies will be awarded for:**

**Field Wheat Competition**

**Field Barley Competition**

**Field Chickpea Competition**

**Most successful Exhibitor in Small Seeds**

**Champion Samples of Wheat**

**Champion Samples of Barley**

**Champion Samples of Sorghum**

**Overall Champion Exhibit**

**SAMPLES of wheat and barley** are to be delivered to Millmerran Rural by **Monday 26 February 2024** or by arrangement with the sSeward.

Samples will be tested for protein, screenings and weight etc. All samples are to be free of insects. Any samples with insects will be disqualified.

<p><b>WHEAT - 4 KG</b></p> <ol style="list-style-type: none"> <li>1. Any hard variety to be named</li> <li>2. Any soft variety to be named</li> <li>3. Any Durum variety to be named</li> </ol> <p><b>Prizes for Samples 1 st, 2 nd, 3 rd</b></p>	<p><b>SEEDS - 4 KG</b></p> <p>ALL TO BE NAMED</p> <ol style="list-style-type: none"> <li>8. Maize</li> <li>9. Oats</li> <li>10. Any Winter Legume</li> <li>11. Any summer Legume</li> <li>12. Bird Seeds</li> <li>13. Any other Seeds</li> <li>14. Hybrid Sorghum</li> </ol> <p><b>Prizes for Sorghum Samples 1 st, 2 nd, 3 rd</b></p>
<p><b>BARLEY - 4 KG</b></p> <ol style="list-style-type: none"> <li>4. Any malt variety to be named</li> <li>5. Any feed variety to be named</li> </ol> <p><b>Prizes for Samples 1 st, 2 nd, 3 rd</b></p>	<p><b>SHEAVES</b></p> <p>10 cm in diameter unless specified</p> <ol style="list-style-type: none"> <li>15. Winter Cereals</li> <li>16. Summer Small Seeds</li> <li>17. Forage Sorghum</li> <li>18. Collection of useful Grasses - Millmerran District</li> <li>19. Maize for Silage</li> <li>20. Maize - 6 Cobs</li> <li>21. Sunflower - 3 Heads</li> <li>22. Cotton - 4 Plants tied</li> <li>23. Any other Sheaves</li> <li>24. Hybrid Sorghum - 10 Heads tied</li> </ol> <p><b>Prizes for Sorghum Sheaves 1 st, 2 nd, 3 rd</b></p>
<p><b>OIL SEEDS - 4 KG</b></p> <ol style="list-style-type: none"> <li>6. Any winter crop oilseed</li> <li>7. Any summer crop oilseed</li> </ol>	



# SECTION - FRUIT & VEGETABLES

**Stewards:** Dean Grundon - 0429496129  
**Assistant Stewards:** Paula McKinlay

Charlie Batzloff - Ph 46954129  
Rose Twidale Lindsay Cooper

**ALL ENTRIES and EXHIBITS will be taken on FRIDAY MORNING 1 MARCH 2024 between 7.30am - 10.00am.**

**Separate Entry Form for each Section (Not Class), please.**

JUDGING COMMENCES 11.30AM FRIDAY 1 MARCH 2024

**Exhibits of Fruit and Vegetables must be grown by Exhibitor.**  
**ALL PRODUCE MAY BE CUT AT JUDGES DISCRETION.**

**NO ENTRIES TO BE REMOVED BY EXHIBITORS. THE STEWARDS WILL GIVE ALL ENTRIES TO THE EXHIBITOR AFTER 3.30PM AND BEFORE 4.00PM SUNDAY 3 MARCH 24**

Entry Fees include GST      Prize Money does NOT include GST

**Entry Fee                      .50cents**  
**Prize Money                  First \$5      Second \$3      Except where otherwise stated.**

**Trophy for Champion Exhibit donated by Cann's Mini Excavator Service**

**Champion Ribbon**

**Trophy for Champion Plate of Tomatoes donated by Val Grundon**

**Champion Ribbon**

**Trophy for Champion Pumpkin donated by Millmerran Rural**

**Champion Ribbon**

**Trophy for Collection of Fruit donated by Doug & Rose Twidale**

**Trophy for Collection of Vegetables donated by Nola Wade**

**Trophy for Most Successful Exhibitor donated by Pittsworth Betta Home Living**

**Encouragement Award donated by                  Mitre 10 Millmerran**

## ***JUNIOR SECTION - 17 YEARS & UNDER***

**Peter Winter Memorial Trophy for Champion Exhibit donated by Justin Winter**

**Champion Ribbon**

**Trophy for Most Successful Exhibitor donated by Frank Page**

**Encouragement Award donated by Charlie Batzloff**

**Trophies will be presented in the Produce Pavilion after the official welcome on Sunday**

Rules as stated above.

## **ENTRY FREE**

**Prize Money:                  First \$5      Second \$3                      Except where otherwise stated**

**Donated by Captains Mountain Wind Farm**

## **Tips for entering produce in Show**

- **Presentation plays a big part in competition**
- Wipe exhibits clean. A polish with a soft cloth helps improve appearance of melons, pumpkins etc
- Try to pick exhibits without any skin blemishes
- Where an entry requires more than one piece of fruit/vegetable keep all pieces to a similar size and shape. It is better to have two smaller even sized and coloured specimens than two uneven large ones.
- Shallot roots can be trimmed neatly to improve appearance. Rhubarb leaves maybe trimmed if wished. Both can be tied together with string or rubber band to help stand neatly in their bottles of water.
- Sweet corn should have the husk left on for judging.
- Pumpkins/squash look best with a trimmed short stork/stem of approx. 3-5 cms.
- Stewards are happy to answer any of your questions prior to the show.



## CLASS

### FRUIT

1. Figs - 3
2. Grapes - table - plate/bunch
3. Lemons - 3
4. Limes - 3
5. Mangoes - 2
6. Melon - rock melon any variety
7. Melon - watermelon - long
8. Melon - watermelon - round
9. Melon - pie
10. Melon - heaviest any variety
11. Nuts - peanut in shell - 10
12. Nuts any other variety - 10
13. Olives - any variety - 10
14. Passion fruit - 3
15. Pears - 3
16. Rosellas 10 pods
17. AOV not listed - any number
18. Collection fruit - not less than three varieties

**Prize Money 1<sup>st</sup> \$7 2<sup>nd</sup> \$5**

### VEGETABLES

19. Asian vegetable exhibit
20. Beans - butter - 8 pods
21. Beans - dwarf - 8 Pods
22. Beans - snake - 8 pods
23. Beans any variety not listed - 8 pods
24. Beetroot - 3 - tops on
25. Capsicum - any variety - 2
26. Carrots - 3 - tops on
27. Chillies any variety - 3
28. Cucumbers any variety - 2
29. Egg Plant any variety - 2
30. Garlic - any variety - 2
31. Onions any colour - 3
32. Pumpkin - Butternut
33. Pumpkin - Crown Prince
34. Pumpkin - Golden Nugget
35. Pumpkin - Gramma Bugle
36. Pumpkin - Jarrahdale
37. Pumpkin - Kent (Jap)
38. Pumpkin - Qld. Blue - max 30cm width
39. Pumpkin - Table- any variety not listed
40. Pumpkin - heaviest table
41. Pumpkin - heaviest other than table pumpkin

**Prize Money donated by  
Dean Grundon**

**1<sup>st</sup> \$50 2<sup>nd</sup> \$30 3<sup>rd</sup> \$10**

42. Pumpkin - collection - 3 distinct varieties  
**Prize Money 1<sup>st</sup> \$7 2<sup>nd</sup> \$5**
43. Rhubarb - bunch in water
44. Shallots - bunch of 6 in water
45. Silverbeet - bunch in water

46. Squash - button - 3
47. Squash - collection - 3 varieties
48. Sweet corn - husk on - 2 cobs
49. Sweet potato - 2
50. Tomato - egg any colour - 3
51. Tomato - red - 3
52. Tomato - yellow - 3
53. Tomato - cherry - 6 any colour
54. Tomato - miniature any colour - 6  
(eg tear drop / mini roma)
55. Tomato any variety not listed - 3
56. Zucchini - max. length 20cm - 2
57. AOV not listed - any number
58. Collection vegetables -  
not less than four varieties  
**Prize Money 1<sup>st</sup> \$7 2<sup>nd</sup> \$5**

59. Culinary herbs - **collection, in water**
60. My Herb Garden -collection of herbs  
grown in container of choice  
(eg pot, foam box, wheelbarrow)  
**Prize Money donated by  
Dean Grundon**  
**1<sup>st</sup> \$30 2<sup>nd</sup> \$20 3<sup>rd</sup> \$10**

61. Eggs - carton 12  
(eg Hen, Bantam, Duck)  
NOT MIXED
62. Honey - 500g container



### JUNIOR SECTION - 17YRS & UNDER

63. Melon - rock melon
64. Melon - watermelon
65. Peanuts in shell - 4
66. Fruit - any other variety not listed
67. Collection of fruit -  
not less than 3 varieties  
**Prize Money 1<sup>st</sup> \$7 2<sup>nd</sup> \$5**
68. Beans any variety - 6
69. Cucumber - any variety - 1
70. Pumpkin - Qld. blue
71. Pumpkin - Table any variety not listed
72. Pumpkin - heaviest
73. Radish - 3
74. Tomato - cherry - 3
75. Tomato - miniature - 6  
(eg tear drop / Mini roma)
76. Zucchini - 1
77. Vegetable - any variety not listed
78. Collection vegetables - not less than  
3 varieties  
**Prize Money 1<sup>st</sup> \$7 2<sup>nd</sup> \$5**
79. Eggs- half carton 6  
(eg Hen, Bantam, Duck)  
NOT MIXED



# SECTION - WOOL

Stewards:      **K. Nielsen 0417639943**      **E. Nielsen**

ALL ENTRIES TO BE AT WOOL PAVILION BY 9.00AM SATURDAY 2 MARCH 2024  
JUDGING WILL COMMENCE AT 9.30AM SATURDAY 2 MARCH 2024

Entry Fees include GST  
**Entry Fee \$1**

Prize Money does NOT include GST

## REGULATIONS

- 1 Exhibits must be from the 2023/24 clip.
- 2 All Fleece must be the bona fide property of the Exhibitor.
- 3 Owners of registered Merino Studs are not eligible for entry.
- 4 Judges will transfer any Fleece to the Class to which, in their opinion, it rightfully belongs
- 5 If, in the opinion of the Judge, a Fleece is overgrown for its type, it will be disqualified
- 6 If, in the opinion of the Judge, a Fleece is not made up of Wool from the one Sheep, all Fleece from that Exhibitor will be disqualified
- 7 Wool not to be removed before 4 pm on Sunday 3 March 2024 and not without payment of entry fees and permission from the Steward
- 8 Exhibitors are reminded that the Society's General Regulations also apply to this Section
- 9 A judge will be appointed by the Brisbane Wool Selling Brokers' Assn.
- 10 Fleece from a property where a Merino Stud is conducted are not eligible for entry.
- 11 **N.B.** Under **NO** circumstances will **BLACK or COLOURED WOOL** be allowed in the pavilion.

## SCALE OF POINTS FOR JUDGING

1. Trueness of Type	10pts	Possessing the most desirable characteristics of the Breed and taking into account Environmental conditions and area in which the Wool is grown.
2. Conformity of Length	10pts	The desired uniformity of Length throughout the entire fleece as it stands.
3. Soundness	10pts	Sufficient Tensile Strength to give the best results under the combing system.
4. Handle	8pts	The Softness and Pliancy necessary for outstanding results in spinning.
5. Colour or Bloom etc	6pts	The possession of those Characteristics for Top Grading from a Style point of view.
6. Character & Style	10pts	Even and well-defined Crimp from Butt to Tip.
7. Density	6pts	Compactness of Growth, Bulk and Breadth of Staple.
8. Evenness	10pts	The regularity of Count
9. Clean Fleece Weight	30pts	Actual Clean

TOTAL POINTS                      100

## CLASS

1. Fine Merino Fleece - Ewe or Wether

**Trophy** donated by **Kirby & McKinlay**

2. Medium Merino Fleece - Ewe or Wether

**Trophy** donated by **John & Evelyn Lindenmayer**

**Champion Merino Flock Fleece of Show**

**Trophy** donated by **DA Hall & Co**

**Trophies will be presented in the Produce Pavilion  
after the official welcome on Sunday of Show.**



**OUR SINCERE THANKS TO CAPTAINS MOUNTAIN WINDFARM  
FOR THEIR GENEROUS  
SUPPORT OF JUNIOR SECTIONS  
IN THE PAVILIONS**

Visit [captainsmountainwindfarm.com.au](http://captainsmountainwindfarm.com.au)  
or call 1800 313 095 to learn more

f in

**CAPTAINS  
MOUNTAIN**  
WINDFARM

**THANK YOU TO ALL EXHIBITORS  
WHO HAVE TAKEN THE TIME  
TO PREPARE ENTRIES  
FOR  
OUR 2024 SHOW**



**SUNDAY  
COLLECTION OF EXHIBITS**

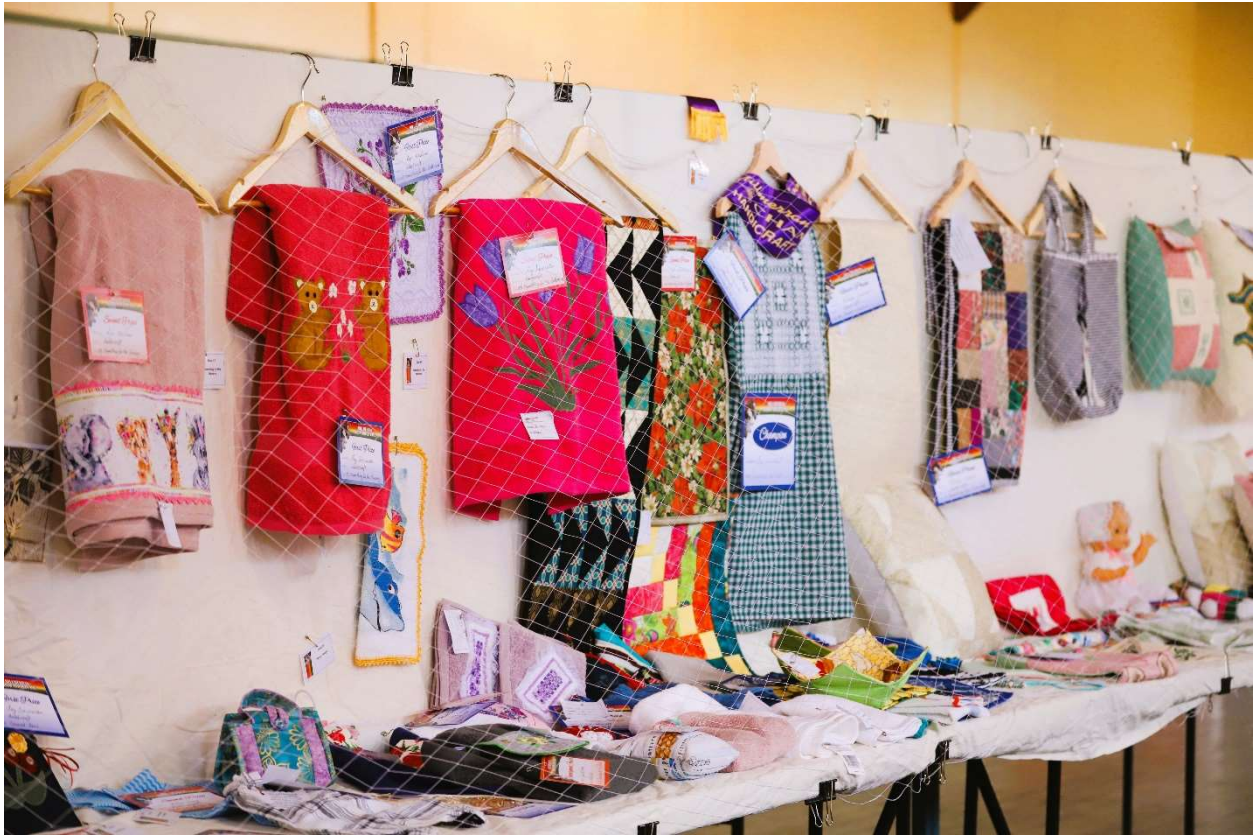
**ITEMS  
CAN NOT BE REMOVED  
FROM PAVILION  
(WITH EXCEPTION OF ART & PRODUCE)**

**UNTIL 4.00PM**

**IF YOU CANNOT BE THERE TO COLLECT  
YOUR ITEMS PLEASE ARRANGE FOR  
SOMEONE TO COLLECT THEM ON YOUR  
BEHALF AS THE MILLERRAN SHOW SOCIETY  
WILL NOT BE RESPONSIBLE AFTER THE  
SHOW**

**THANK YOU**





**2023 SHOW**





2023 SHOW





# SHOW SOCIETY REGULATIONS

The attention of intending Exhibitors is drawn to the fact that Entries are accepted subject to the Rules of the Queensland Chamber of Agricultural Societies and to the Constitution and Rules of this Society.

- 1 Subject to the Committee's approval, the Judges in all cases shall have the right to award Special Prizes (although not specified in the Prize Schedule) if they consider Special Exhibits merit such recognition, and they may withhold awarding a Prize if the Exhibit is considered unworthy. In the event of there being only one Entry in any Class, the Judge may, at his discretion, issue a First Prize Ticket, but unless otherwise stated, where the First Prize exceeds 50cents, no Association money shall be paid unless the Judge especially certifies the Exhibit to be of exceptional excellence.
- 2 **Ticket Holders, on presentation of their Tickets, will be admitted to the Grounds. Non Ticket Holders will be charged Daily Admission Fee -Adults \$15, Age Pensioners \$10, High School Students 12 Yrs & over (with ID) \$10, Primary School Students 11 Yrs & under Free. Weekend Admission - Adults \$20, Age Pensioners \$15, High School Students 12 Yrs & over (with ID) \$15, Primary School Students 11 Yrs & under Free**
- 3 **Payment of Tickets - Membership: \$30.00 (2 Adults or 2 Adults & Children up to 16 years), Single Adult (no children) \$15.00, Age Pensioners (2 Adults) \$20.00, Single Age Pensioner \$10.00, (Students over 16 years are single Adult); per annum, grants Admission to the Grounds on both days of the Show. Pre Purchased : Adults \$15, Age Pensioners \$10, High School Students 12 Yrs & over (with ID) \$10, Primary School Students 11 Yrs & under Free, grants Admission to the Grounds on both days of the Show.**
- 4 **Payment of Membership gives the right to nominate a fellow Member for election to the Committee or to be in person nominated to such position, enabling the right to vote at meetings.**
- 5 **Entry Fees are 10% of the First Prize Money, except where otherwise stated. All Fees to be included with Entries.**
- 6 No Stock shall be allowed to come before a Judge bearing any Ribbon, Badge or Mark.
- 7 Exhibits in all Sections must be grown or manufactured by or be the work of the Exhibitor, or must be Bona fide Property of the Exhibitor. The Committee shall be entitled to require a declaration of ownership in any case they may think fit.
- 8 All persons in charge of Exhibits will be subject to the direction of the Stewards on the several departments of the Exhibition with reference to placing and removal of their Exhibits and taking part in the Parades. The Stewards have power to disqualify. Exhibitors must display their own Exhibits.
- 9 **On no consideration will any Exhibit be allowed to be removed or taken away until 4.00 pm on the second day of the Show or removed without permission of the Steward in charge, and it shall be a condition of entry that each Exhibitor shall hold the Association harmless and indemnified against legal proceedings arising from any loss, damage, accident, or any cause whatsoever to the Exhibits while on the Grounds.**
- 10 No Pass shall be issued to any Exhibitor.
- 11 All Pavilion Exhibits to be in position by time stipulated in Schedule for each Section.
- 12 Exhibits in collection shall not be eligible to compete separately except where specially mentioned.
- 13 The Stewards may transfer Exhibits entered in the wrong Class to the correct Class, but are unable to interfere with Judges Decision.
- 14 **Prize Money not claimed within One Week of the Date of the Show will revert to the Funds of the Society.**
- 15 Exhibits in Schoolwork Section to be Work done during the School Year 2023/2024 and under the supervision of a School Teacher.
- 16 Any Exhibitor using obscene or abusive language to be disqualified.
- 17 Any Exhibitor cruelly ill-treating any Exhibit to be disqualified.
- 18 Any NOT capable or competent Exhibitor to be removed by Steward
- 19 Exhibits must bear Tickets showing Class, Section and Number, but no name visibly attached.
- 20 Grand Parade at 1.00 pm on the Second Day of the Show. All stock judged and unjudged to take part in the Grand Parade.
- 21 All Entries to be on Association's Printed Forms.
- 22 All Exhibits in Ring Events must conform to the Printed Time Schedules, otherwise they will be disqualified.
- 23 No Collectors will be allowed on the Grounds excepting those Authorised by the Committee, and any Person infringing this Regulation may be removed by any Member of the Committee, with or without the assistance of the Police.
- 24 Showmen's Guild Personnel are not allowed to use loudspeakers or make any other unseemly noise that interferes with the broadcasting from the Ring.

## MILLMERRAN SHOW SOCIETY INC

Show Secretary:	Lyn Kirby	0429954151
President:	Patrick Lunney	0428052254
Committee Secretary:	Karen Dieckmann	0447543149







**2023 SHOW**

