



MILLMERRAN SHOW SOCIETY INC

89 th MILLMERRAN SHOW

SATURDAY 28 FEBRUARY 2026
SUNDAY 1 MARCH 2026

ALL GATE ENTRY TICKETS TO BE PRE- PURCHASED THROUGH

<https://www.trybooking.com/DHFHH>

President Matt Clark 0428205487

Show Secretary Lyn Kirby 0429954151

Committee Secretary Karen Dieckmann 0447543149

www.millmerranshowsociety.com - show@millmerranshow.com.au



MEMBERSHIP	ADULTS SINGLE	\$15
	ADULTS FAMILY	\$30
	[INCLUDES CHILDREN UP TO 16 YRS CHILDREN OVER 16 BECOME SINGLE ADULT]	
	AGE PENSIONERS SINGLE	\$10
	AGE PENSIONERS COUPLE	\$20

=====

PRE PURCHASED 2 DAY TICKETS	ADULTS	\$15
	AGE PENSIONERS	\$10
	HIGH SCHOOL STUDENTS	\$10
	[12 YRS & OVER WITH ID]	
	PRIMARY SCXHOOL STUDENTS	FREE

=====

GATE ADMISSION DAILY	ADULTS	\$15
	AGE PENSIONERS	\$10
	HIGH SCHOOL STUDENTS	\$10
	[12 YRS & OVER WITH ID]	
	PRIMARY SCXHOOL STUDENTS	FREE

=====

GATE ADMISSION WEEKEND	ADULTS	\$20
	AGE PENSIONERS	\$15
	HIGH SCHOOL STUDENTS	\$15
	[12 YRS & OVER WITH ID]	
	PRIMARY SCHOOL STUDENTS	FREE

=====

PRE PURCHASED TICKETS ONLY [NOT MEMBERSHIP] AVAILABLE
<https://www.trybooking.com/DHFHH>

MEMBERSHIP AVAILBLE FROM SHOW OFFICE ONE WEEK PRIOR TO SHOW

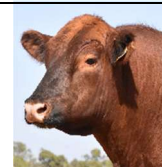
**ATM ON GROUNDS
SATURDAY ONLY**



**OFFICE OPEN
ONE WEEK
PRIOR TO SHOW
07 46951419
PO BOX 150**



SECTION - STUD BEEF CATTLE



SUNDAY 1 MARCH 2026

ADMISSION TO GROUNDS: All Gate Entry tickets are to be purchased via www.trybooking.com/DHFHH
ALL TICKETS MUST BE SCANNED UPON ARRIVAL

CHIEF STEWARD: Debbie Reid Ph 0438656424
Assistants: Steve Reid Nikki Macqueen

TO BE JUDGED SUNDAY 1 MARCH 2026 AT 8.30AM SHARP

NB: ENTRIES CLOSE FRIDAY 20 FEBRUARY 2026

MAIL TO Debbie Reid 'Talbalba' MS 1231 Millmerran 4357
Email admin@talbalba.com

All entries must be clearly printed in BLOCK LETTERS and accompanied by ENTRY FEES.

Payment may be made by EFT **BSB 638-070** **Acc # 9079084** **Reference NAME and the**
letters SCEF

Or **Cheque payable to Millmerran Show Society** **PO Box 150** **Millmerran** **4357**

Entry fees include GST

Entry Fee Classes 1-10 \$5.50
Class 11 No entry fee

Prize Money does NOT include GST

Class 12 \$10
Classes 13-14 \$ 5.50

Prize Money First \$10 Second \$5 Unless otherwise stated
Ribbons awarded to third place.

All Competitors Pay Admission to the Showground.

Cattlemen's Breakfast - Competitors ONLY

Sincere thanks to Garth and Jan Fitzgerald of **MILLMERRAN RURAL AGENCIES**, for the Cattlemen's Breakfast.

FEATURE EVENT

McGregor Gourlay Agriculture Services and Nutrien Ag Solutions Pittsworth
SUPER SIRE CHALLENGE \$1000 purse for winner

Rules

- 1 To be judged on completion of the Stud Cattle section before the Youth events
- 2 One entry per exhibitor, must compete in the breed classes
- 3 Exhibitors with > 1 breed may enter one from each breed
- 4 \$20 Entry Fee
- 5 To be judged in conjunction, by the Judge of the day and Spectators

Crowd prize pool sponsored by NAB Agribusiness Toowoomba

- 1 \$100 first ticket drawn from spectator participants
- 2 \$100 first ticket drawn from spectators choosing the winning bull

ADDITIONAL RULES AND REGULATIONS FOR STUD CATTLE

- 1 All animals MUST be the bone fide property of the exhibitor and MUST be identified with either a brand or a tattoo.
- 2 Dehorned cattle may compete if it is acceptable to the respective breed Society.
- 3 Broad ribbon winners MUST participate in the Grand Parade.
- 4 Stud cattle may leave the Showground after 4 p.m. Judging Day.
- 5 Led Steers/Heifers will be weighed before 8am on Judging Day at Prime Cattle yards.
- 6 Any NOT capable or competent Exhibitor to be removed by Steward

HEALTH REGULATIONS FOR BOTH STUD AND PRIME CATTLE

- 1 Stock MUST originate from herds free from Brucellosis, Tuberculosis and Trichomoniasis
- 2 Stock MUST be sprayed for ticks if they are from a tick area. Millmerran is in a tick free area.
- 3 Any animals coming across a state border must be accompanied by health papers signed by a Government Veterinarian in relation to their Johnes Disease status.
Millmerran is in a Johnes protected area

STUD CATTLE ARE JUDGED IN 3 SECTIONS (a) BRITISH (b) EUROPEAN (c) TROPICAL
Please state Section and BREED clearly on your Entry Form. Classes for all Sections are as follows:

- CLASS 1 Heifer under 12 months.
CLASS 2 Heifer 12 months and under 16 months.
CLASS 3 Heifer 16 months and under 20 months.
Junior Champion Female and Reserve Junior Champion Female
- CLASS 4 Heifer or cow 20 months and under 24 months
CLASS 5 Heifer or cow 24 months and over.
Senior Champion Female and Reserve Senior Champion Female
- CLASS 6 Bull under 12 months.
CLASS 7 Bull 12 months and under 16 months.
CLASS 8 Bull 16 months and under 20 months.
Junior Champion Bull and Reserve Junior Champion Bull
- CLASS 9 Bull 20 months and under 24 months.
CLASS 10 Bull 24 months and over.
Senior Champion Bull and Reserve Senior Champion Bull
- CLASS 11 Interbreed Exhibitor's Group. Owned by the exhibitor.
3 head - both sexes to be represented. Open to all beef exhibits shown in general classes
First Prize \$100 donated by **Clyde Johnson** plus **Sash**
Second Prize Product donated by **Riverina** plus **Sash**
Third Prize Product donated by **Riverina** plus **Sash**

SUPER SIRE CHALLENGE
INTERBREED CHAMPION BULL
INTERBREED CHAMPION FEMALE

LED STEERS / HEIFERS - Commercial heifers are acceptable in Classes 12 and 13.

Stewards reserve the right to redistribute entries over classes according to entry numbers & weights

- CLASS 12 Led steer. No permanent incisors. Suitable for local trade. Under 401 kg.
CLASS 13 Led steer. No permanent incisors. Suitable for Korean or Restaurant trade.
Over 400 kg.
- | | | | | |
|--|--------------------|-------------------|--------------------|-------------------|
| Class 12 & 13 | Prize Money | First \$65 | Second \$50 | Third \$40 |
| Trophies for Champion and Reserve Champion Led Steer / Heifer | | | | |

SINCERE THANKS TO THE TROPHY DONORS

BRITISH - Grand Champion Female	<u>TALBALBA HEREFORDS</u>	\$100
BRITISH - Grand Champion Bull	<u>MILLMERRAN MEATS</u>	\$100
EUROPEAN - Grand Champion Female	<u>CECIL & YVONNE MUIR MEMORIAL TROPHY</u>	
	<u>donated by IAN & LIZA MUIR</u>	\$120
EUROPEAN - Grand Champion Bull	<u>NARRABURRA FARM</u>	\$100
TROPICAL - Grand Champion Female	<u>LOO-LA-BELLES</u>	Trophy
TROPICAL - Grand Champion Bull	<u>RAFF GROUP MILLMERRAN</u>	Trophy
SUPREME CHAMPION - Interbreed Champion Female of the Show	<u>GDL Dalby</u>	\$100
SUPREME CHAMPION - Interbreed Champion Bull of the Show	<u>NW FITZGERALD - PATRON'S TROPHY</u>	
	<u>\$150 donated by JT RURAL</u>	
LED STEER or HEIFER PRIZE MONEY	<u>JT RURAL</u>	\$150
	<u>GDL Dalby</u>	\$100
	<u>P & PR THORNTON</u>	\$ 50
LED STEER or HEIFER - CHAMPION	<u>SHERDALE PASTORAL CO</u>	\$100
- RESERVE CHAMPION	<u>ELDERS LTD</u>	\$ 80

PRODUCE KINDLY DONATED BY RIVERINA (AUST) PTY LTD. TO BE DISTRIBUTED THROUGHOUT THE DAY